

THE INFORMATION CONTAINED IN THIS DRAWING IS THE SOLE PROPERTY OF Q.E.D. ENVIRONMENTAL ANY REPRODUCTION IN PART OR WHOLE WITHOUT THE WRITTEN PERMISSION OF Q.E.D. ENVIRONMENTAL IS PROHIBITED.

REVISIONS

REV.	DESCRIPTION	ECO #	DRAWN BY	CHECKED BY	DATE
-	INITIAL RELEASE	3988	TR	MTM	1/15/2018

FLUID DISCHARGE

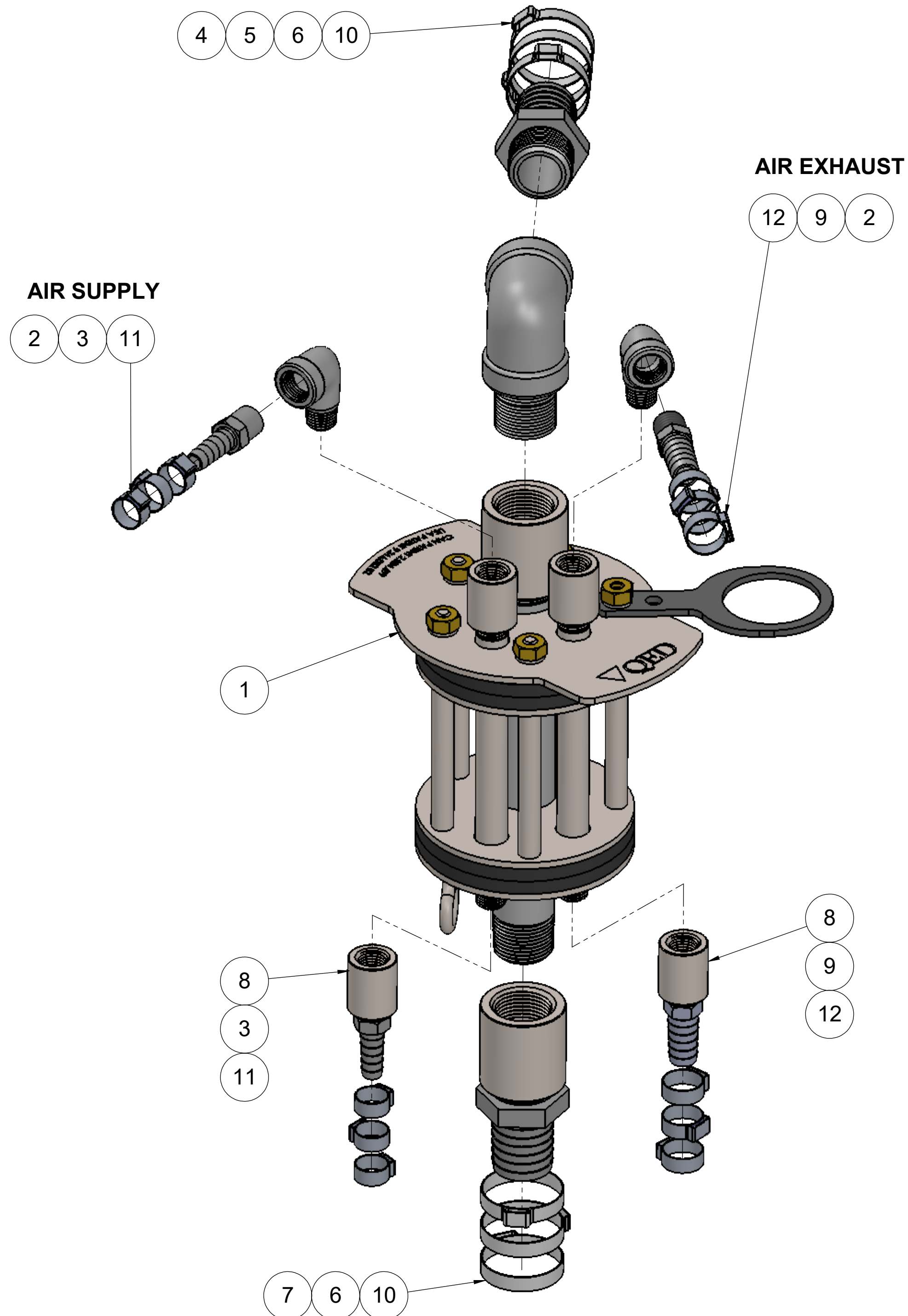
4 5 6 10

AIR EXHAUST

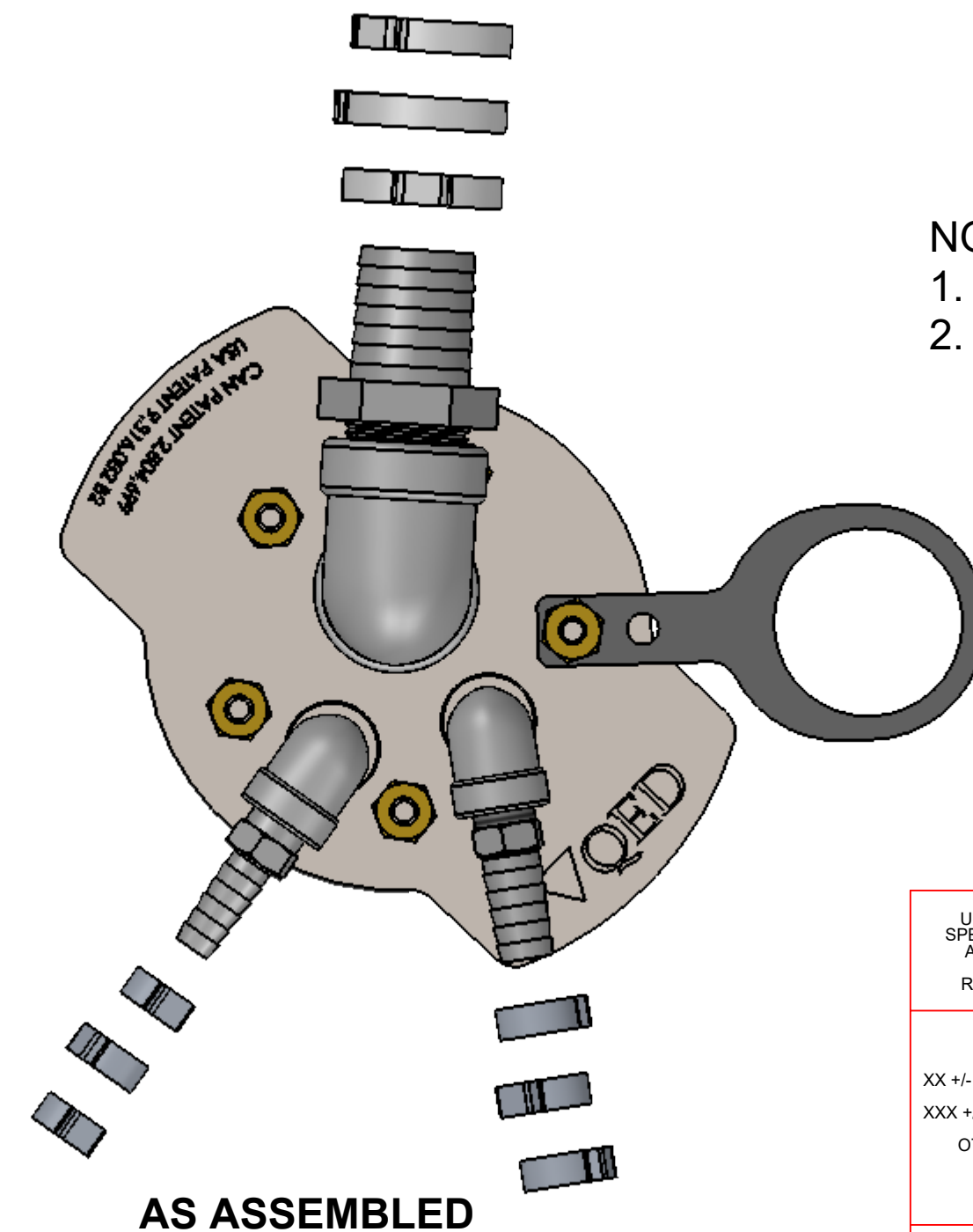
12 9 2

AIR SUPPLY

2 3 11




ITEM	PART #	DESCRIPTION	QTY.
1	403-80-BASE	4" SCH 80 BASE 3-FTGS FOR APS	1
2	204981	STREET ELBOW 1/4 304 SS	2
3	38875	BARB 3/8" x 1/4" MPT AIR SUPPLY S.S.	2
4	203618	NIPPLE 3/4 MPT CLOSE 316SS	1
5	202925	ELBOW 3/4 304 SS	1
6	205702	BARB 1 H - 1.25 T X 3/4 MPT 316SS	2
7	COUP-SS-75	3/4in NPT Coupling	1
8	COUP-SS-25	1/4" SS FULL COUPLING	2
9	38874	BARB 1/2" x 1/4" MPT EXHAUST S.S.	2
10	39360	CLAMP 34.6-706R SS 304 SS	6
11	35209	CLAMP 13.8-706R (FOR 1/2" TUBING)	6
12	38934	CLAMP 17.0-706R (FOR 5/8" TUBING)	6



NOTE:

1. TEFLON TAPE ALL PIPE THREADED JOINTS.
2. CLAMPS ARE PLACED IN A PLASTIC BAG AND SHIP TOGETHER

UNLESS OTHERWISE SPECIFIED, DIMENSIONS ARE IN INCHES AND INCLUDE PLATING REMOVE ALL BURRS	DRAWN BY <b>TR</b>	DATE <b>11/30/17</b>	 <b>QED</b> Environmental Systems 2355 BISHOP CIRCLE W, DEXTER, MI. 48130
	CHECKED BY <b>MTM</b>	DATE <b>3/9/18</b>	
TOLERANCES XX +/- .01 FRACT +/- 1/64 XXX +/- .005 ANGLES +/- 1/2 OTHER TOLERANCES AS SPECIFIED	APPROVED BY -	DATE -	TITLE <b>WELL SEAL, 4" 3-PORT FOR APS, W/ 1-1/4, 1/2 &amp; 5/8 OD T BS E. OUT</b>
NEXT ASSY -	MATERIAL -	DWG. NO. AP304005	REV. -
USED ON -	FINISH -	SCALE 1:8	SHEET 1 OF 1