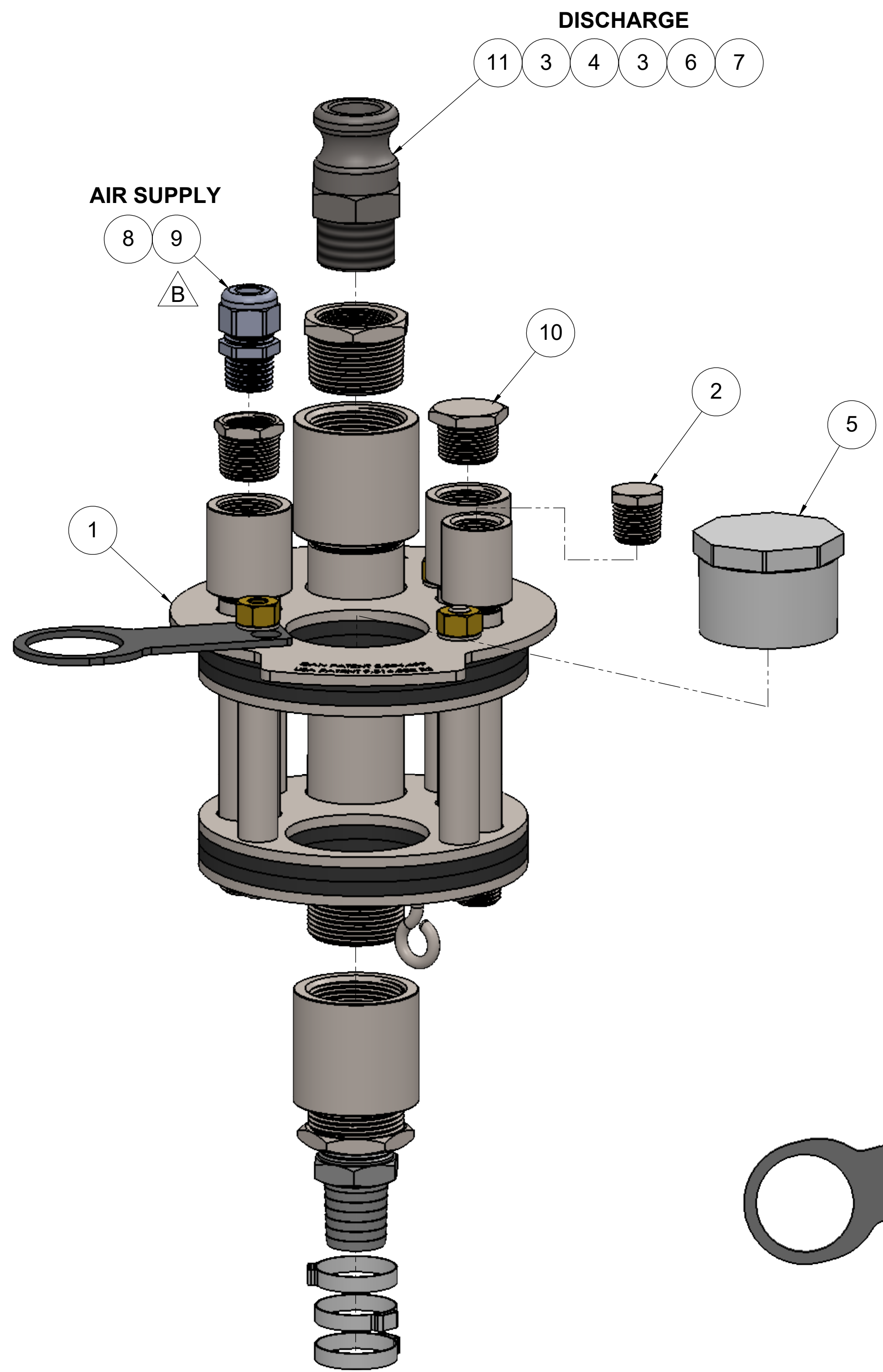


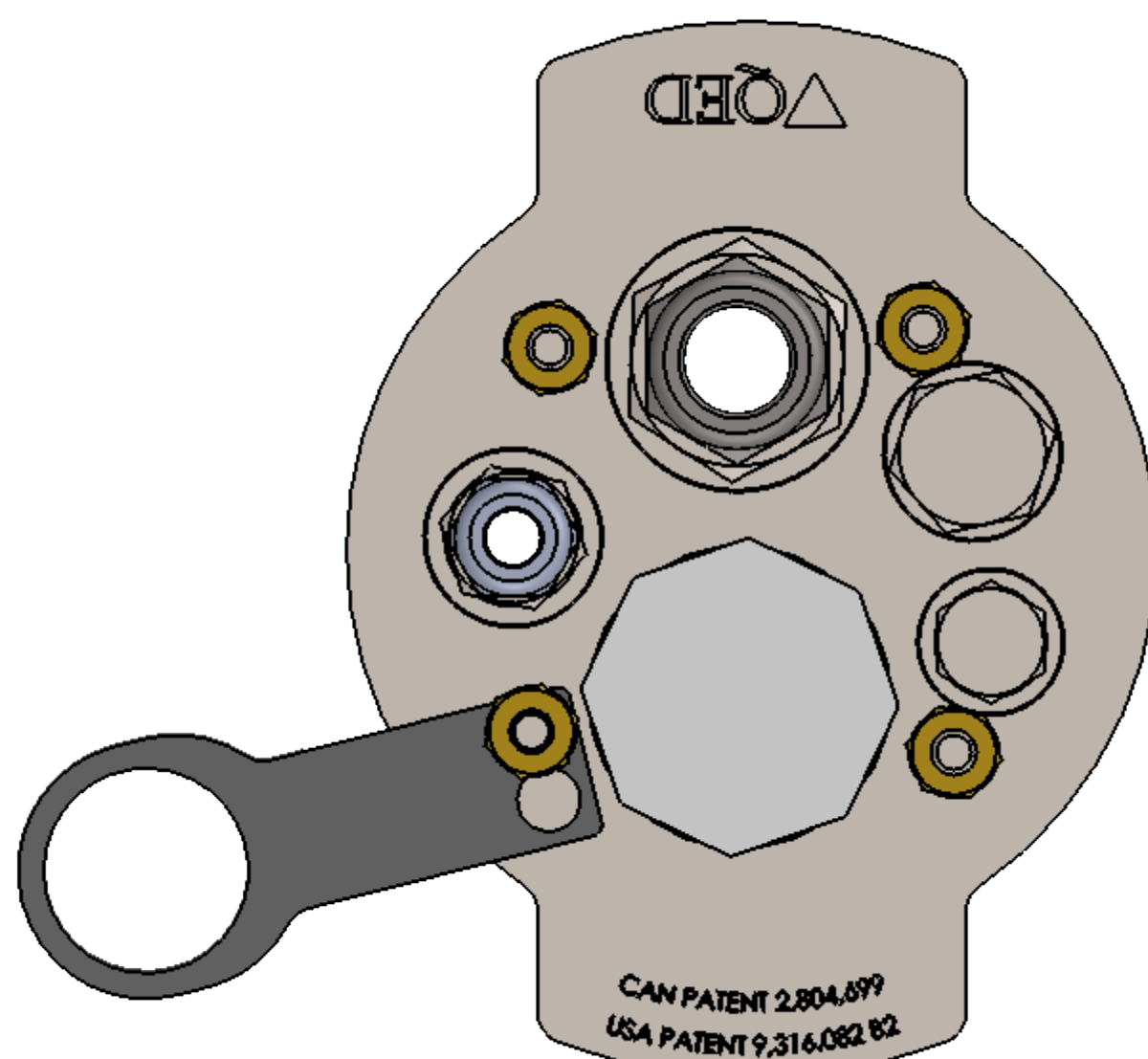
THE INFORMATION CONTAINED IN THIS DRAWING IS THE SOLE PROPERTY OF Q.E.D. ENVIRONMENTAL ANY REPRODUCTION IN PART OR WHOLE WITHOUT THE WRITTEN PERMISSION OF Q.E.D. ENVIRONMENTAL IS PROHIBITED.

REVISIONS

| REV. | DESCRIPTION | ECO # | DRAWN BY | CHECKED BY | DATE |
|------|---------------------------------------------------------------------------|-------|----------|------------|------------|
| - | INITIAL RELEASE | 4020 | TR | - | 1/25/2018 |
| A | ITEM #11 WAS NYLON CAMSOCKET TYPE, NIPPLE AND ELBOW FOR THAT PORT REMOVED | | TR | - | 8/14/2018 |
| B | 39227 WAS 202868 | 4311 | MTM | - | 10/24/2018 |




| ITEM | PART # | DESCRIPTION | QTY. | |
|------|---------------|----------------------------------|--------------------------------------|---|
| 1 | 625-80-BASE | 6" SCH 80 OR DR17 WELL BASE CAP | 1 | |
| 2 | PLUG-SS-50 | 1/2 IN NPT-M PLUG | 1 | |
| 3 | RB-SS-125-100 | REDUCING BUSHING 1-1/4 X 1 304SS | 2 | |
| 4 | COUP-SS-125 | 1-1/4in NPT Coupling | 1 | |
| 5 | 204372 | PLUG 2" SPG SCH 40 PVC | 1 | |
| 6 | 205583 | BARB 1" x 1" MPT S.S. | 1 | |
| 7 | 39360 | CLAMP, 1-EAR FOR 1-1/4" TUBING | 3 | |
| 8 | RB-SS-75-50 | 3/4-1/2in Reducer Bushing | 1 | |
| B | 9 | 39227 | COMP .230 -.546 X 1/2" MPT LT NYLON | 1 |
| 10 | PLUG-SS-75 | 3/4in NPT-M Plug | 1 | |
| A | 11 | 40090 | ADAPTER, 1" MPT "F" TYPE CAM LOCK SS | 1 |



AS ASSEMBLED

NOTE:
 1. TEFLON TAPE ALL PIPE THREADED JOINTS.
 2. CLAMPS ARE PLACED IN A PLASTIC BAG AND SHIP TOGETHER

| | | | |
|---------------------------------------------------------------------------------------------------------|-------------|----------|----------------------------------------------------------------------------------------------------------------------------------|
| UNLESS OTHERWISE SPECIFIED, DIMENSIONS ARE IN INCHES AND INCLUDE PLATING REMOVE ALL BURRS | DRAWN BY | DATE |  2355 BISHOP CIRCLE W, DEXTER, MI. 48130 |
| | TR | 01-25-18 | |
| TOLERANCES XX +/- .01 FRACT +/- 1/64 XXX +/- .005 ANGLES +/- 1/2 OTHER TOLERANCES AS SPECIFIED | CHECKED BY | DATE | TITLE WELL SEAL 6" 5-PORT FOR APS W/1 CAMLCK & 1/2 COMP FTG & 1-1/4 T B EXH I |
| | - | - | |
| NEXT ASSY - USED ON - | APPROVED BY | DATE | DWG. NO. AP306223 SCALE 1:4 SHEET 1 OF 1 |
| | - | - | |
| | MATERIAL - | | REV. B |
| | FINISH - | | |