

THE INFORMATION CONTAINED IN THIS DRAWING IS THE SOLE PROPERTY OF Q.E.D. ENVIRONMENTAL ANY REPRODUCTION IN PART OR WHOLE WITHOUT THE WRITTEN PERMISSION OF Q.E.D. ENVIRONMENTAL IS PROHIBITED.

REVISIONS

REV.	DESCRIPTION	ECO #	DRAWN BY	CHECKED BY	DATE
-	INITIAL RELEASE	4039	TR	-	2/12/2018
A	ITEM #10 WAS NYLON CAMSOCKET TYP, NIPPLE AND ELBOW FOR THAT PORT REMOVED	4241	TR	-	8/15/2018
B	39227 WAS 202868, 39226 WAS 203430	4311	MTM	-	10/24/2018

FLUID DISCHARGE

- 10
- 8
- 9
- 2
- 3

AIR EXHAUST

- 5
- B

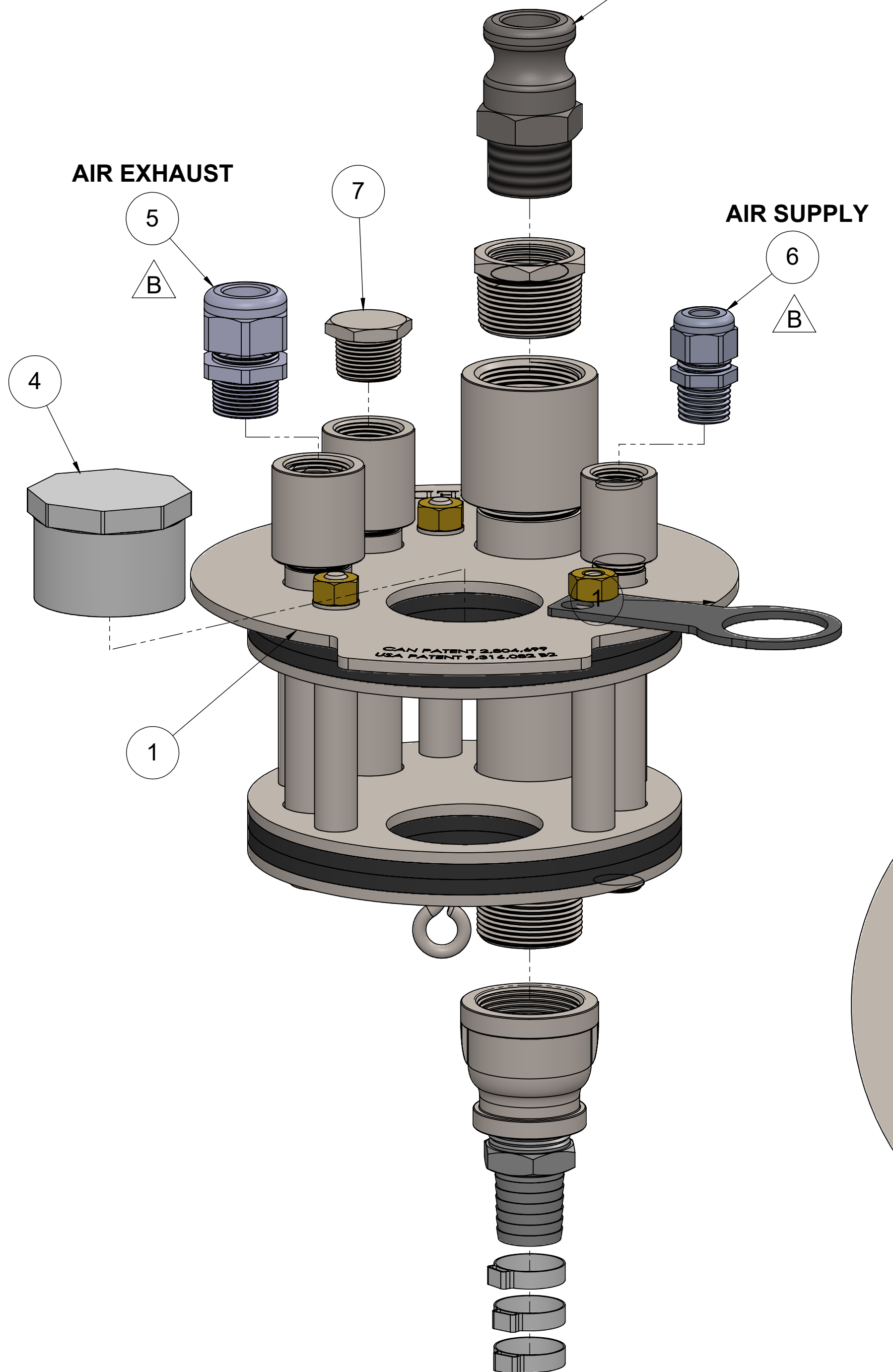
- 7

AIR SUPPLY

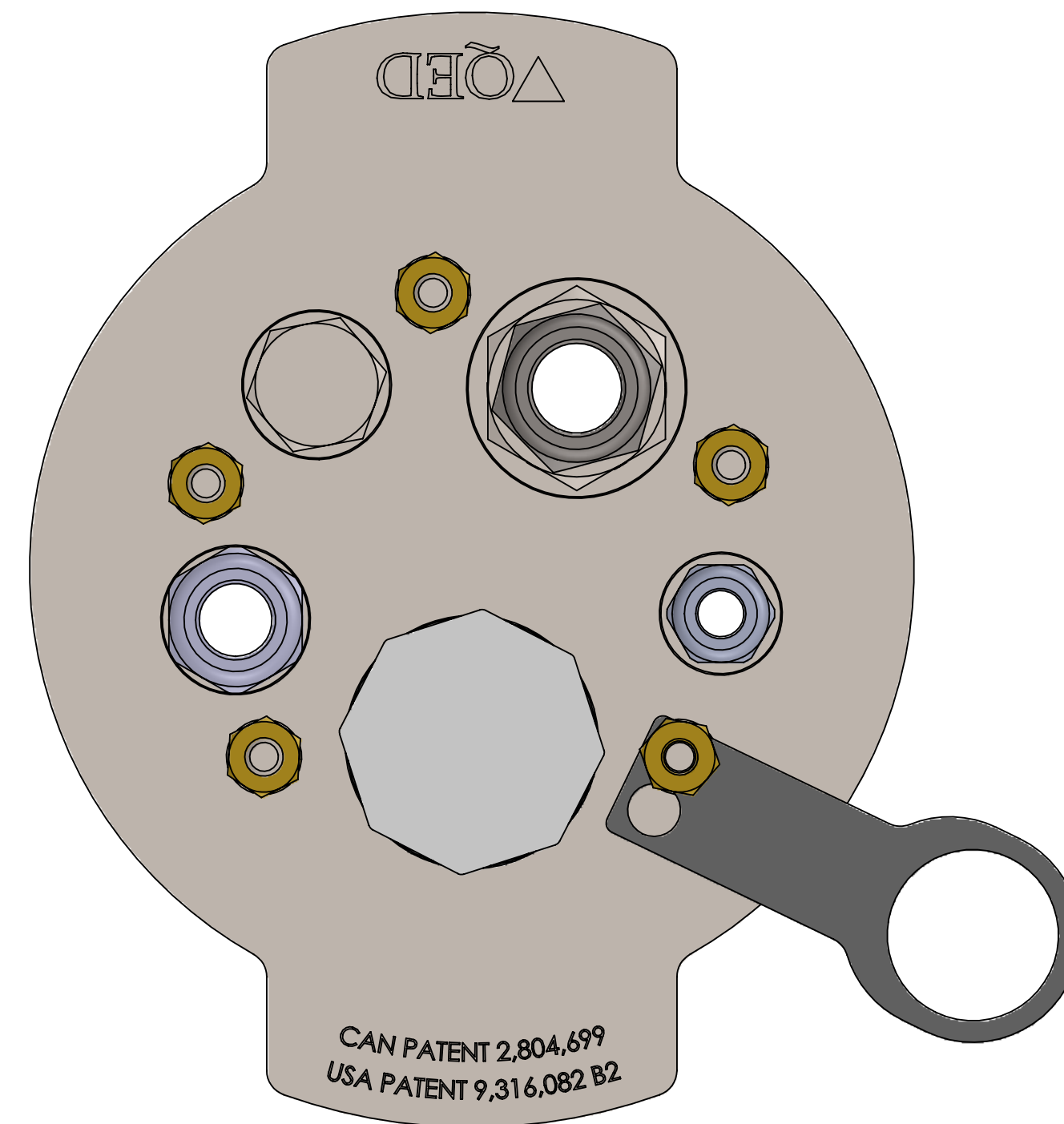
- 6
- B

- 4

- 1




ITEM	PART #	DESCRIPTION	QTY.
1	825-DR11-BASE	8" DR11 WELL BASE CAP WITH 2" GAS PORT	1
2	205583	BARB 1" x 1" MPT S.S.	1
3	36165	CLAMP, 1-EAR FOR 1" TUBING	3
4	204372	PLUG 2" SPG SCH 40 PVC	1
5	39226	CONNECTOR COMPRESSION 5/8 T X 3/4 NPT	1
6	39227	COMP .230 -.546 X 1/2" MPT LT NYLON	1
7	PLUG-SS-75	3/4in NPT-M Plug	1
8	RB-SS-125-100	REDUCING BUSHING 1-1/4 X 1 304SS	1
9	RC-SS-125-100	RED. COUPLING 1-1/4 TO 1IN	1
10	40090	ADAPTER, 1" MPT "F" TYPE CAM LOCK SS	1



AS ASSEMBLED

NOTE:

1. TEFLON TAPE ALL PIPE THREADED JOINTS.
2. CLAMPS ARE PLACED IN A PLASTIC BAG AND SHIP TOGETHER

UNLESS OTHERWISE SPECIFIED, DIMENSIONS ARE IN INCHES AND INCLUDE PLATING REMOVE ALL BURRS	DRAWN BY	DATE	 2355 BISHOP CIRCLE W, DEXTER, MI. 48130
	TR	02-12-18	
TOLERANCES XX +/- .01 FRACT +/- 1/64 XXX +/- .005 ANGLES +/- 1/2 OTHER TOLERANCES AS SPECIFIED	CHECKED BY	DATE	TITLE 8" WELL SEAL, DR11, EXH OUT, 1 CAMPLUG TOP 1 BARB B, 5/8 & 1/2 C FTGS
	-	-	
NEXT ASSY -	APPROVED BY	DATE	DWG. NO. AP308222
USED ON -	-	-	
MATERIAL -	FINISH -	SCALE 1:4	REV. B
			SHEET 1 OF 1