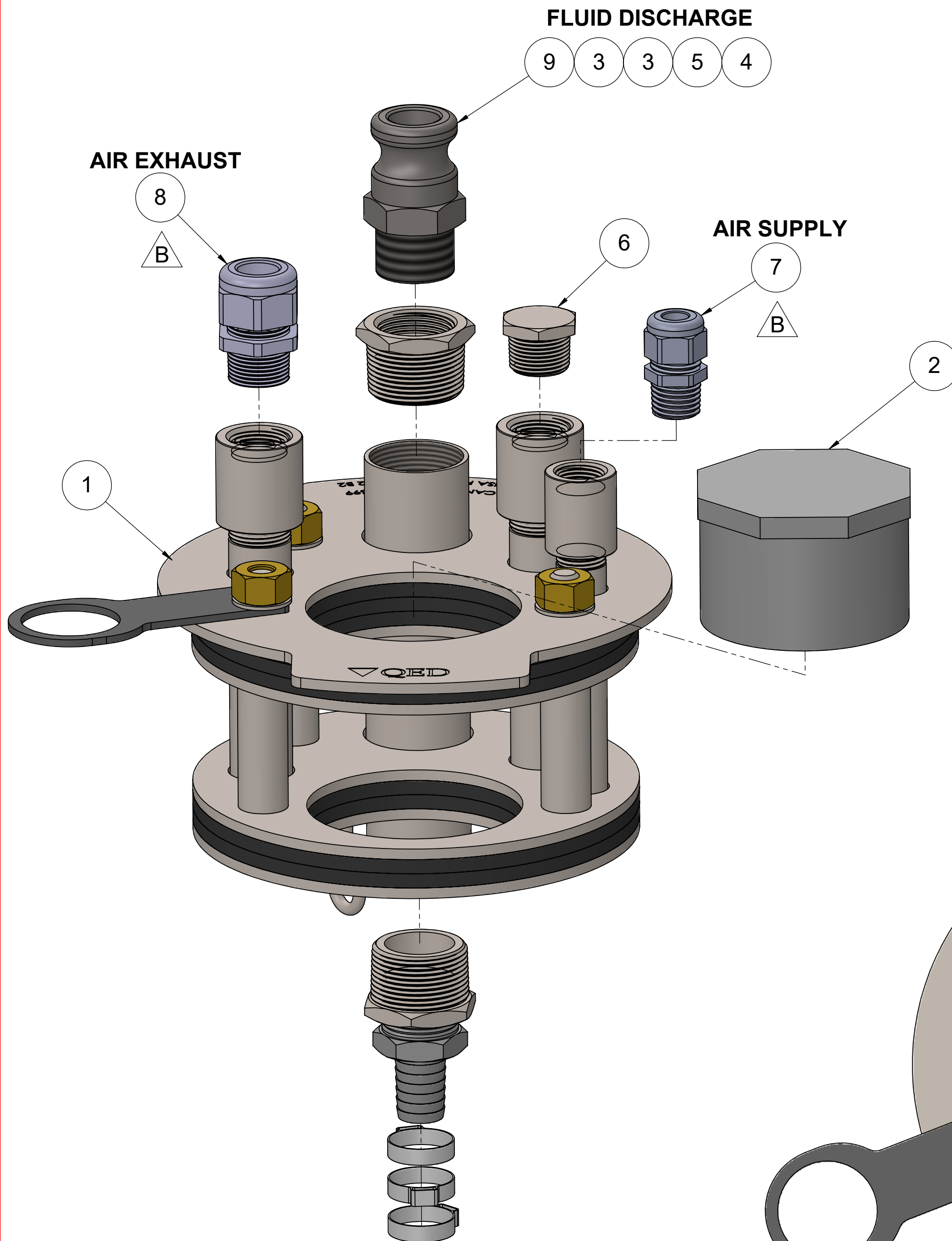


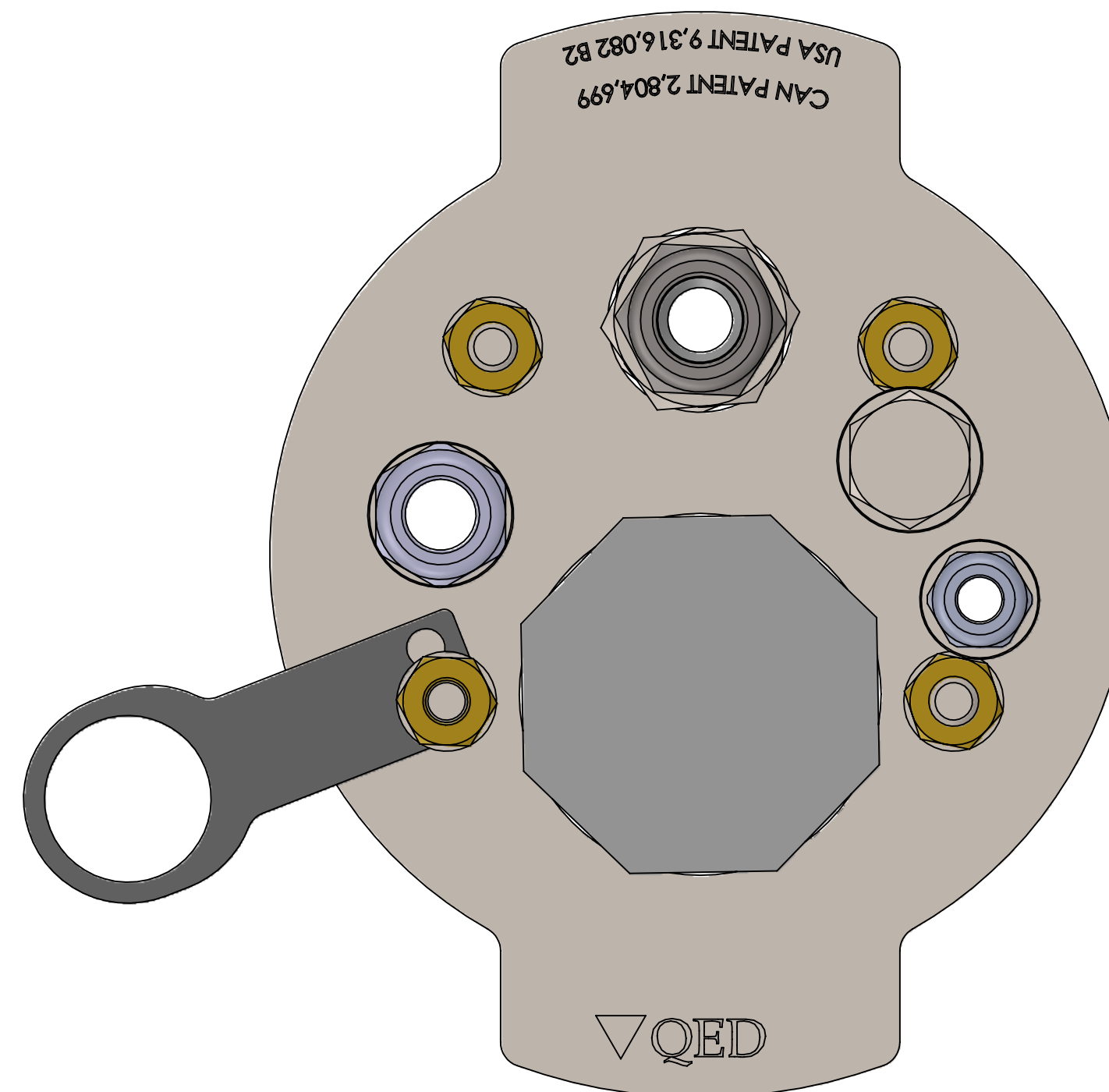
THE INFORMATION CONTAINED IN THIS DRAWING IS THE SOLE PROPERTY OF Q.E.D. ENVIRONMENTAL ANY REPRODUCTION IN PART OR WHOLE WITHOUT THE WRITTEN PERMISSION OF Q.E.D. ENVIRONMENTAL IS PROHIBITED.

REVISIONS

REV.	DESCRIPTION	ECO #	DRAWN BY	CHECKED BY	DATE
-	INITIAL RELEASE	4045	TR	-	2/14/2018
A	ITEM #9 WAS NYLON CAMSOCKET TYPE, NIPPLE AND ELBOW FOR THAT PORT REMOVED	4241	TR	-	8/15/2018
B	39227 WAS 202868, 39226 WAS 203430	4311	MTM	-	10/24/2018




ITEM	PART #	DESCRIPTION	QTY.
1	835-80-BASE	8" SCH 80 OR DR17 WELL, 3" GAS PORT, BASE CAP	1
2	200972	PLUG 3 S SCH 40 PVC	1
3	RB-SS-125-100	REDUCING BUSHING 1-1/4 X 1 304SS	2
4	36165	CLAMP, 1-EAR FOR 1" TUBING	3
5	38879	BARB 13/16" x 1" MPT S.S.	1
6	PLUG-SS-75	3/4in NPT-M Plug	1
7	39227	COMP .230 -.546 X 1/2" MPT LT NYLON	1
8	39226	CONNECTOR COMPRESSION 5/8 T X 3/4 NPT	1
9	40090	ADAPTER, 1" MPT "F" TYPE CAM LOCK SS	1



AS ASSEMBLED

- NOTE:
1. TEFLON TAPE ALL PIPE THREADED JOINTS.
 2. CLAMPS ARE PLACED IN A PLASTIC BAG AND SHIP TOGETHER

UNLESS OTHERWISE SPECIFIED, DIMENSIONS ARE IN INCHES AND INCLUDE PLATING REMOVE ALL BURRS	DRAWN BY TR	DATE 02-14-18	 2355 BISHOP CIRCLE W, DEXTER, MI. 48130
	CHECKED BY -	DATE -	
TOLERANCES XX +/- .01 FRACT +/- 1/64 XXX +/- .005 ANGLES +/- 1/2 OTHER TOLERANCES AS SPECIFIED	APPROVED BY -	DATE -	TITLE 8" WELL SEAL, EXH OUT, SCH 80, 5-PORT, 3 GAS, 1 CAMPLUG, 1 BOTT, 5/8 & 1/2 C FTGS
NEXT ASSY -	MATERIAL -	DWG. NO. AP308349	REV. B
USED ON -	FINISH -	SCALE 1:4	SHEET 1 OF 1