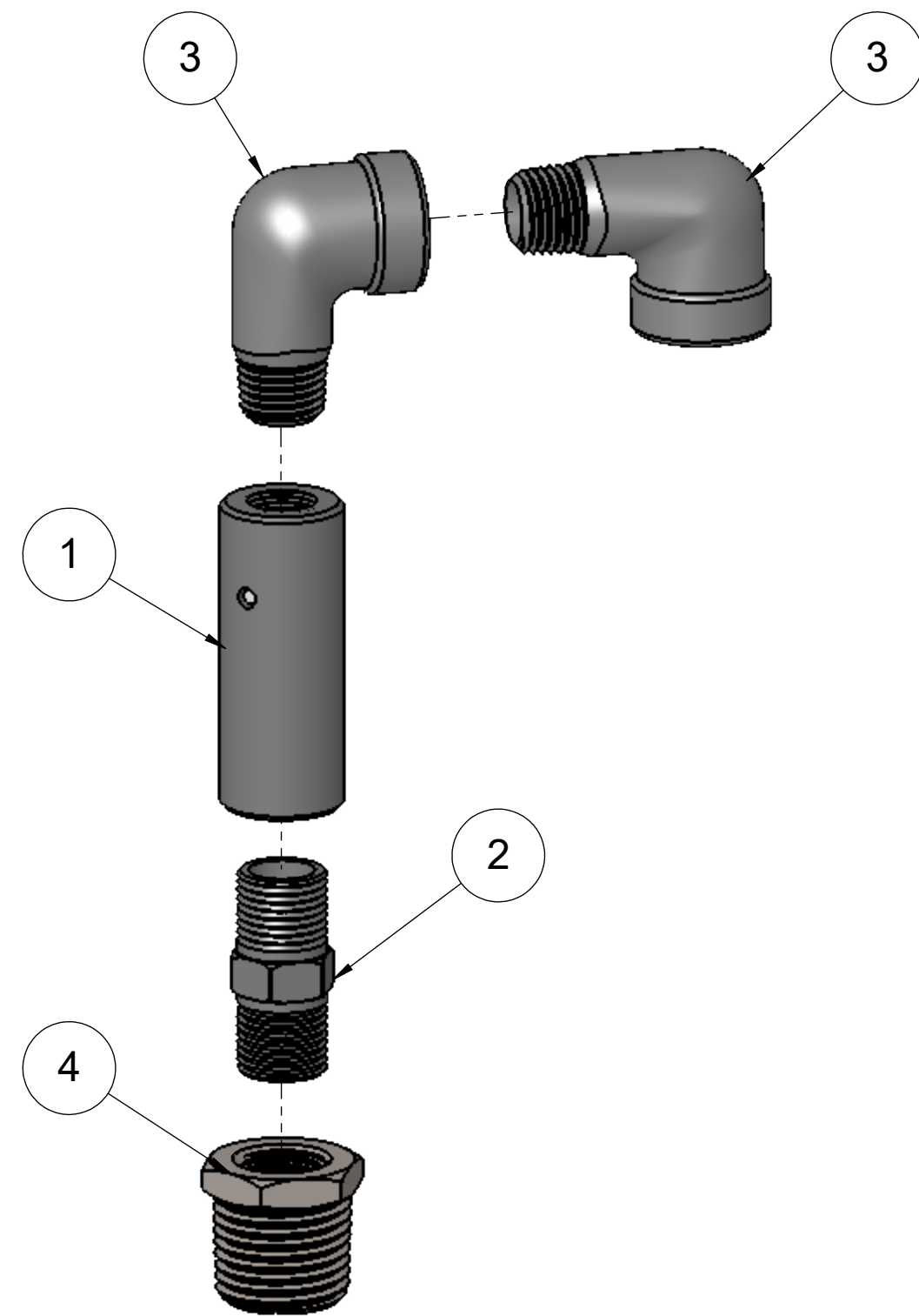


THE INFORMATION CONTAINED IN THIS DRAWING IS THE SOLE PROPERTY OF Q.E.D. ENVIRONMENTAL ANY REPRODUCTION IN PART OR WHOLE WITHOUT THE WRITTEN PERMISSION OF Q.E.D. ENVIRONMENTAL IS PROHIBITED.


REVISIONS					
REV.	DESCRIPTION	ECO #	DRAWN BY	CHECKED BY	DATE
-	INITIAL RELEASE	4050	TR	MTM	2/15/2018



NOTE:

1. TELFON TAPE PIPE THREADED JOINTS.
2. STREET ELBOW IS FACING DOWNWARD.

ITEM	PART #	DESCRIPTION	QTY.
1	301048	CHECK VALVE VITON BALL 316SS	1
2	204998	NIPPLE 1/4 316SS HEX	1
3	204981	STREET ELBOW 1/4 304 SS	2
4	RB-SS-50-25	1/2 TO 1/4 SS BUSHING	1

<small>UNLESS OTHERWISE SPECIFIED, DIMENSIONS ARE IN INCHES AND INCLUDE PLATING REMOVE ALL BURRS</small> <small>TOLERANCES XX +/- .01 FRACT +/- 1/64 XXX +/- .005 ANGLES +/- 1/2 OTHER TOLERANCES AS SPECIFIED</small>	<small>DRAWN BY</small> TR	<small>DATE</small> 02-15-18	 QED <small>Environmental Systems</small> 2355 BISHOP CIRCLE W, DEXTER, MI. 48130
	<small>CHECKED BY</small> MTM	<small>DATE</small> 4/5/18	
	<small>APPROVED BY</small> -	<small>DATE</small> -	
	<small>NEXT ASSY</small> -	<small>MATERIAL</small> -	
<small>USED ON</small> -	<small>FINISH</small> -	<small>SCALE</small> 1:1	<small>SHEET</small> 1 OF 1